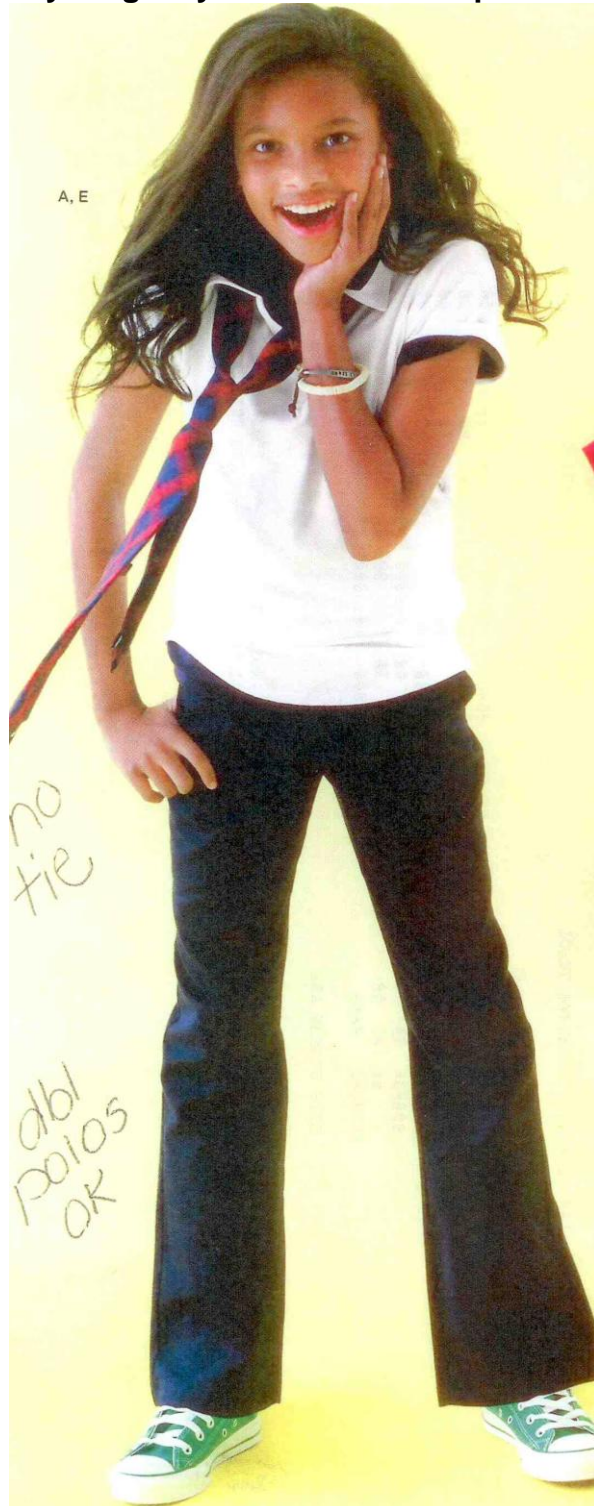


To assist students and parents in selecting dress code appropriate attire for the 2015-2016 school year, we have put together some images to better visualize the dress code policy expectations and to help answer questions.

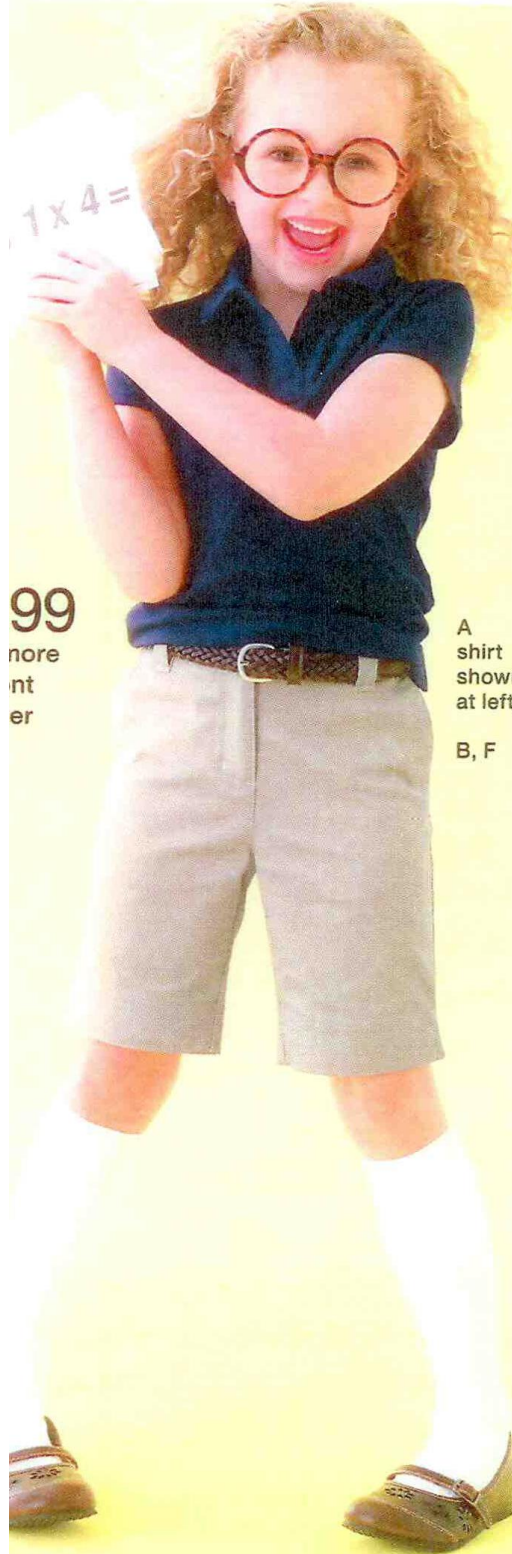
**IMAGE #1**

In this image, you will see that this young lady's attire is appropriate, except for the neck tie. She is wearing a solid polo shirt (no logo) with dark navy pants. Her footwear is an athletic style. Minus the neck tie, this young lady would be in compliance.



## IMAGE #2

In this image, you will see that this young lady's attire is appropriate. She is wearing a solid polo shirt (no logo) with khaki shorts that would be of appropriate knee length. Her shirt is tucked in, which is encouraged by the dress code policy but not required. She is also wearing a belt, which is also encouraged but not required. *What is required is that pants be worn at the waist (for boys)*. Her footwear is a sandal/dress casual style. This young lady would be in compliance.



### IMAGE #3

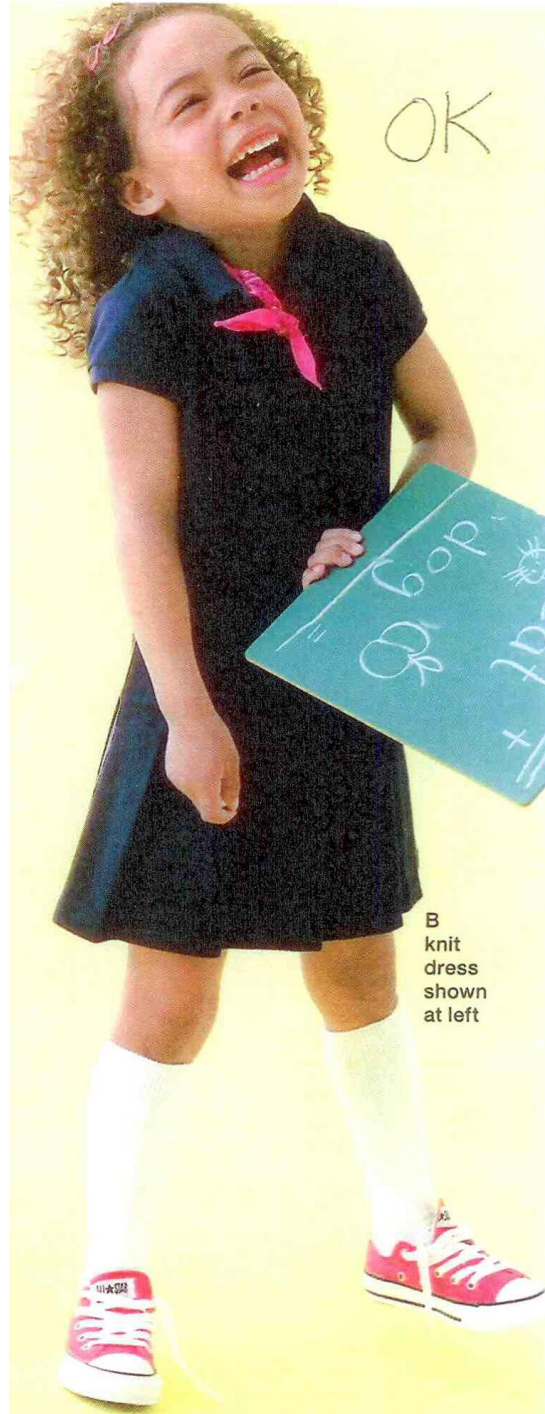
In this image, you will see that this young lady's attire is appropriate. She is wearing a solid khaki jumper/dress of appropriate knee length. Under her jumper she is wearing a solid polo shirt (no logo) with the collar extending over the collar line of the jumper. She is also wearing solid color black leggings. (The leggings would be appropriate for the following reasons: 1) the leggings are being worn under the jumper and not as pants themselves, 2) the leggings are of appropriate color: black, navy blue, or khaki.) Her footwear is an athletic style.



#### IMAGE #4

In this image, you will see that this young lady's attire is appropriate, except for the neckerchief. She is wearing a solid navy jumper/dress (no logo) of appropriate knee length. As her jumper is collared, she is not required to wear a polo shirt underneath. She is also wearing solid color socks (socks may be any color, but must be one solid color without designs and/or logos). Her footwear is an athletic style.

Note: Her hair barrette is permissible. And although her neckerchief is not permissible, students are permitted to wear jewelry.



B  
knit  
dress  
shown  
at left

## IMAGE #5

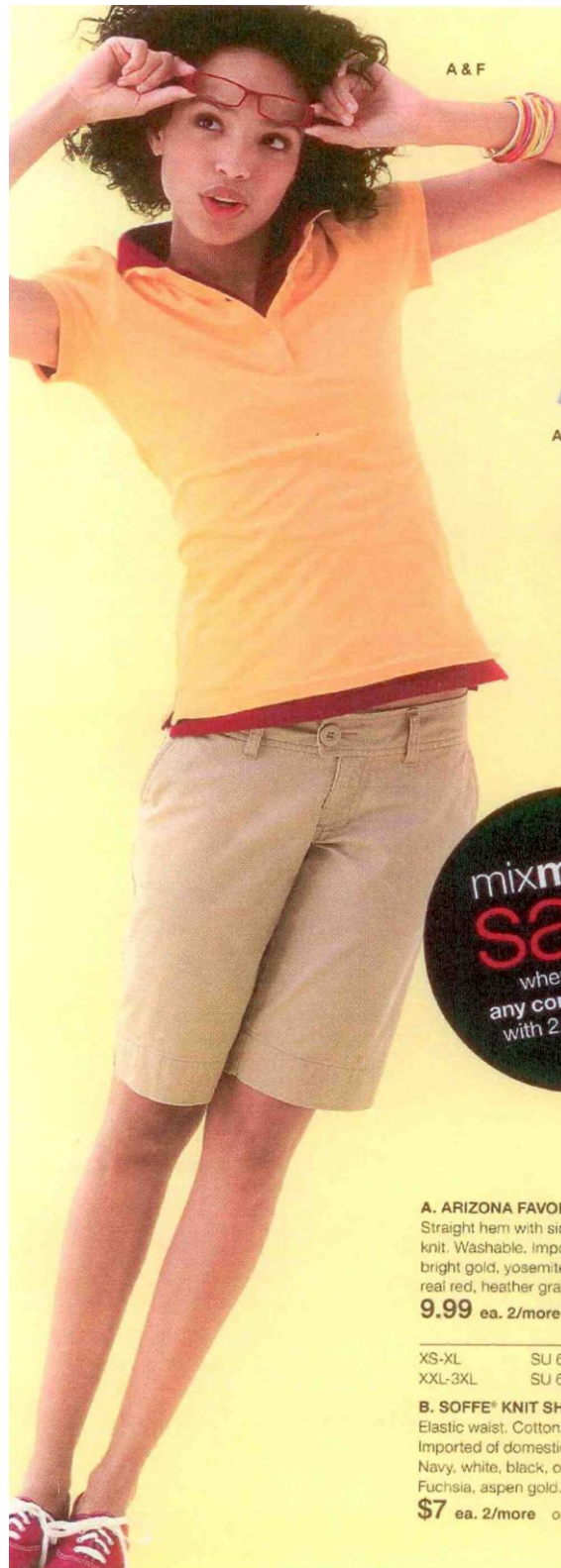
In this image, you will see that this young lady's attire is appropriate, except for her socks (socks may be any color, but must be one solid color without designs). She is wearing a long sleeved polo shirt (no logo and no more than five buttons) and khaki pants. Her footwear is an athletic style.

Note: Students are permitted to wear jewelry, head bands (that do not cover the entire head) and wrist watches, wrist jewelry, or other wrist bands.



**IMAGE #6**

In this image, you will see that this young lady's attire is appropriate. She is wearing two polo shirts, one on top of the other (no logo and no more than five buttons), and khaki shorts of appropriate knee length. Her footwear is an athletic style.



## IMAGE #7

In this image, you will see that this young lady's shirt is not dress code compliant. Although she is wearing a dressier shirt, it is not a polo style shirt and has more than five buttons. She is wearing dark navy pants which are dress code compliant, and her footwear is an athletic style.

Note: Her "ribbon" belt is permissible.



**IMAGE #8**

In this image, you will see that this young man is dress code compliant. If he were wearing purple, 😊, he could serve as the “poster student” for SMS’s dress code.

